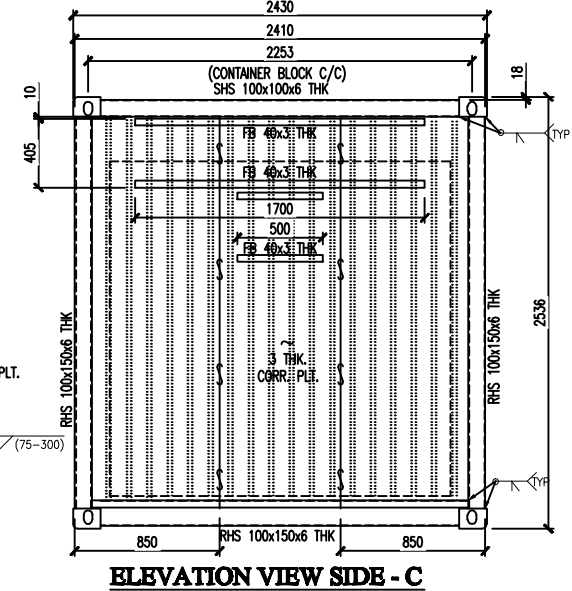
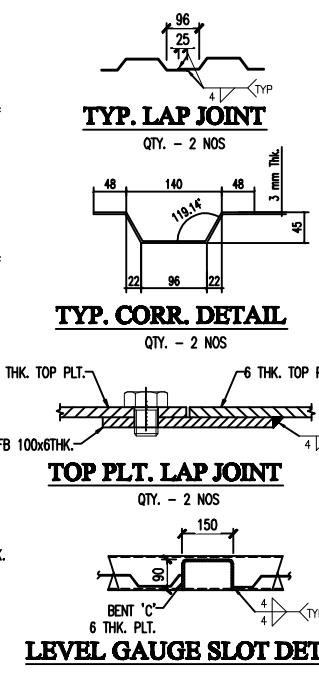
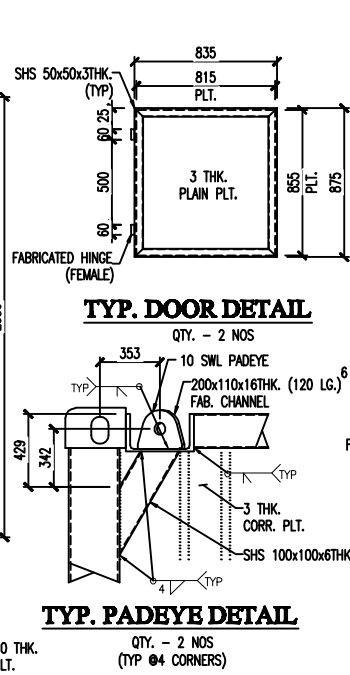
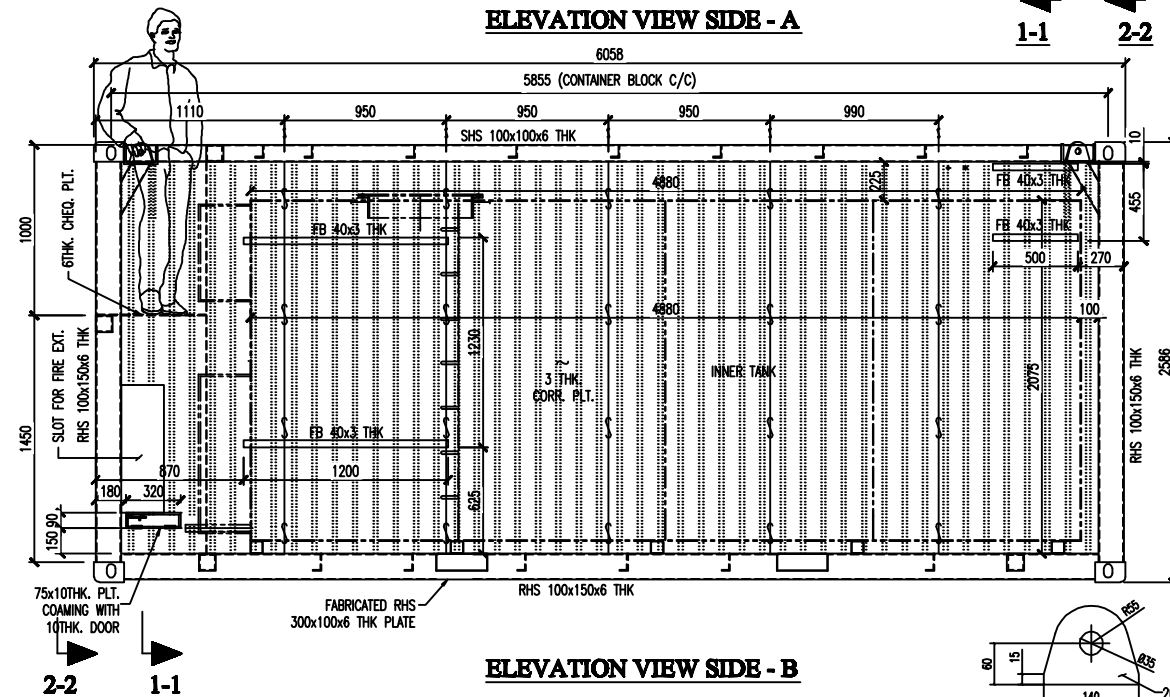
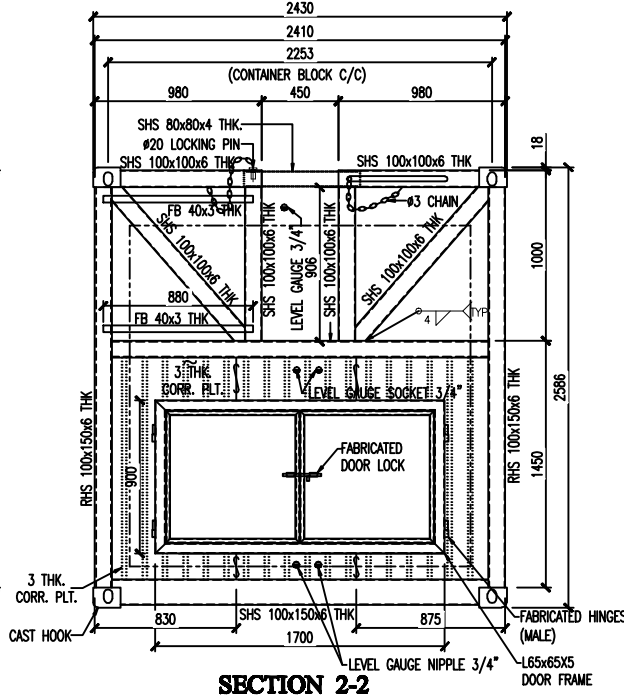
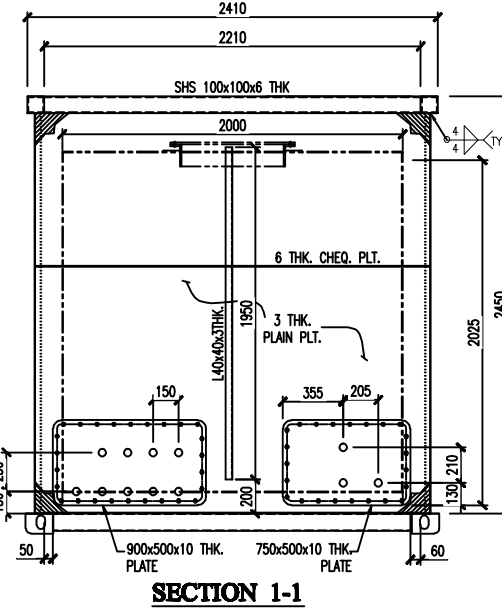


FIRE EXTINGUISHER SLOT DETAIL



ITEM NO	QTY.	MATERIAL DESCRIPTION	SPEC.	LENGTH MM/ M ²	WEIGHT (KG)
1	1	RHS 100x150x6THK	A-36	- M	0
2	1	SHS 100x100x6THK	A-36	- M	0
3	1	SHS 80x80x4THK	A-36	0.8 M	0
4	1	SHS 50x50x4THK	A-36	7.2 M	0
5	1	L65x65x5THK	A-36	2.0 M	0
6	1	L40x40x3THK	A-36	1.3 M	0
7	1	L75x50x6THK	A-36	22.0 M	0
8	1	L100x50x6THK	A-36	26.0 M	0
9	1	PLATE 10 THK	A-36	0.9 M ²	70.85
10	1	PLATE 6 THK	A-36	27.8 M ²	1306.38
11	1	PLATE 3 THK	A-36	45.7 M ²	1078.24
12	1	CHEQ. PLATE 6 THK	A-36	1.2 M ²	56.52
13	1	FLAT BAR 40x3THK	A-36	13 M	12.47
14	1			-	0

- NOTES:**
- STEEL PLATES & SHAPES TO BE ASTM A36 OR EQUIVALENT.
 - WELDING TO BE AS PER AWS D1.1 / ANSI
 - ALL PIPES & FITTINGS SHALL BE AS PER BS STANDARD.
 - DNV 2.7.1 - OFFSHORE CONTAINER DESIGN, CONSTRUCTION, TESTING, INSPECTION AND MARKETING.
 - ASCE - ASD, 9th EDITION - 1989 AMERICAN INSTITUTE OF STEEL CONSTRUCTION, SPECIFICATION FOR THE DESIGN, FABRICATION & ERECTION OF STRUCTURAL STEEL BLDG.

PAINT SPEC:
(OUTSIDE & INSIDE)
ABRASIVE BLAST TO SA 2 1/2.

REFERENCE DESIGN:

COR - 12 - 185 - CA - 081

REV	DATE	DETAIL OF REVISIONS	DRAWN BY

STEEL CONTRACTOR

AL NAWRAS STEEL CO L.L.C
 MARINE ENGINEERS & FABRICATORS
 P.O. BOX 4085 SAHARA BLDG.
 TEL: 06-6047007 FAX: 06-6047008 Email: info@alnavras.com

DRAWING TITLE
5000 GL OIL RECTANGULAR TANK CONTAINER

DATE	PROJECT No.	DRAWING No.	
APRIL 2010	*****	ANS/RSS/T/01	
DRN BY	CHECKED BY	SCALE	SHEET
AMM	FJM	N75	1/1